

HARDKORR
CAMPERS

ADVENTURE IN
ABSOLUTE COMFORT



OUTBACK X PLORES



HKC15-H

**15FT. OFF-ROAD
HYBRID CARAVAN
WITH QUEEN BED**

LIFE WITHOUT LIMITS

OUTBACK XPLORER

HKC15-H

FEATURES:

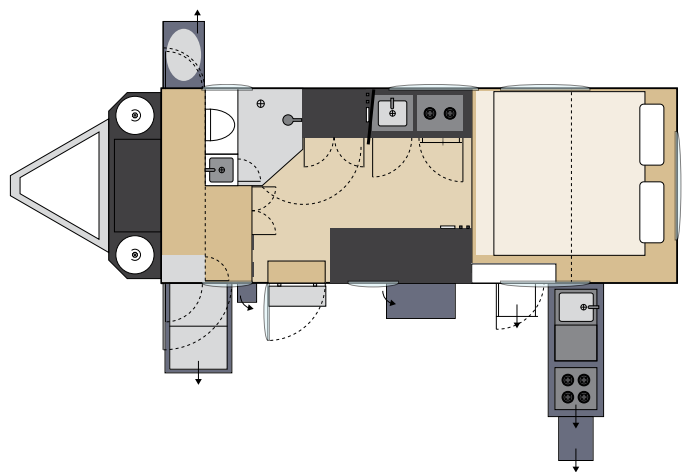
INTERNAL KITCHEN:	Stainless steel sink, 2-burner Dometic® stove, 12v water pump, hot and cold water connections, dining table
EXTERNAL KITCHEN:	Gas 4-burner cooktop, slide-out stainless steel bench and sink, drying rack, LED light, hot and cold water connections
BATHING:	Internal ensuite with Thetford integrated shower/toilet vanity
SLEEPING:	Queen sized bed
COMFORT:	Sofa, reverse cycle air conditioning system, 2 x fans, Truma hot water system, LED TV and antenna, stereo with quad 4" speakers, tinted windows with insect screens & blackout blinds, optional diesel heater
LIGHTING:	LED lighting throughout
STORAGE:	Space for 2 x 9kg gas, external pantry, 96L fridge slide, 2 x 100L water, 80L grey water, Weber BBQ storage, generator storage, canvas/pole storage
12V POWER:	3000W AC switching pure sine wave inverter, 2 x 240AH LiFePO4 batteries, Hardkorr Bluetooth enabled battery monitor, 510W roof-mounted solar, 40A DC-DC with solar regulator, deluxe control panel with water and battery monitors, 7 x 12V points, 2 x dual USB points, 2 x 240V points
AWNING:	4000mm x 2000mm electric awning
TRIM:	Black alloy checker plate on front, sides, rear and wheel flares
SAFETY:	Rear recovery points, scrub bars, Australian standards compliant safety chains
WHEELS & TYRES:	Premium alloy wheels with MT tyres including two full-size spares
SET-UP TIME:	5-10 minutes

CONSTRUCTION:

CHASSIS:	Hot-dip galvanised steel 150mm x 50mm
BODY:	Composite aluminium panels, dual compression door locks, automotive rubber weather seals, 4 x stabiliser legs
CARAVAN HITCH:	Premium AL-KO 360° 50mm hitch
SUSPENSION:	Heavy-duty independent suspension, dual big-bore gas shocks
HUB BEARINGS:	Heavy-duty parallel
BRAKES:	12 inch electric drum brakes with hand brake
JOCKEY:	ARK XO 750

SPECIFICATIONS:

TOTAL LENGTH:	6,500mm
TOTAL WIDTH:	2,200mm
TRAVEL HEIGHT:	2,700mm
TARE WEIGHT (DRY):	2,650kg
ATM WEIGHT:	3,000kg
BALL WEIGHT:	320kg
WATER CAPACITY:	200L (2 x 100L)
WHEELS & TYRES:	265/75 R16 MT
FRIDGE SLIDE:	970mm x 550mm x 590mm



Bonus Inclusions + Optional Extras are not included in the Tare or Ball Weights. Some photos include optional extras. Option packs may change, please confirm on order.

All measurements are approximate and are dependent on each individual product.

Weights are estimated and subject to variation. Options and manufacturing changes will vary these weights.

This information should be used as a guide only. Please confirm with a Hardkorr Campers staff member prior to purchasing.